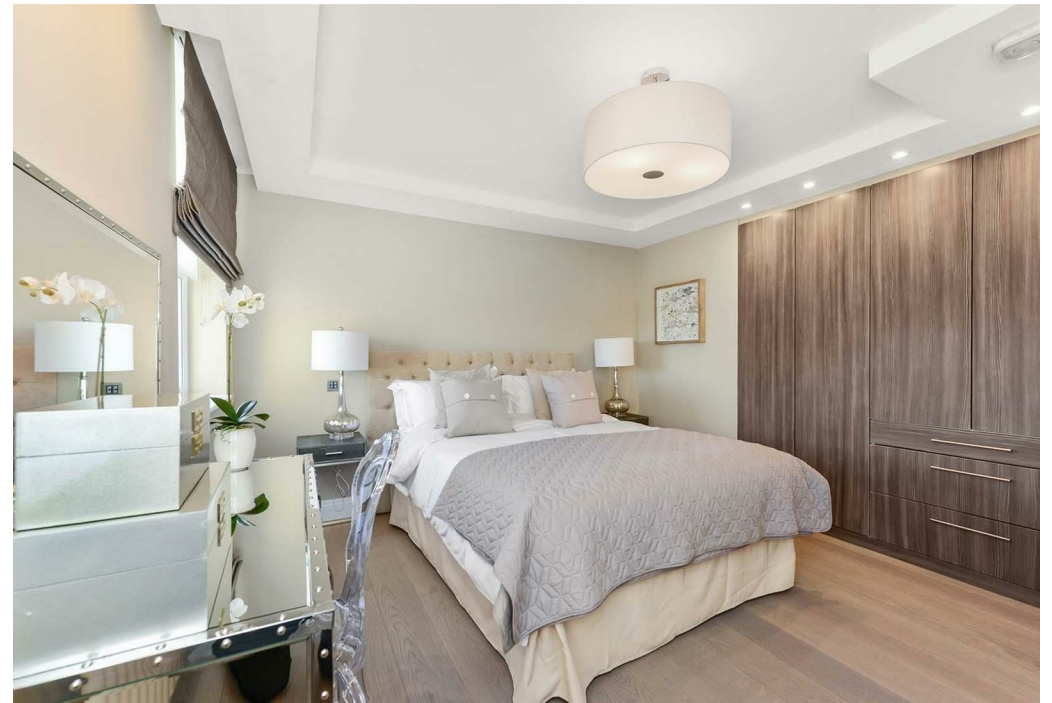




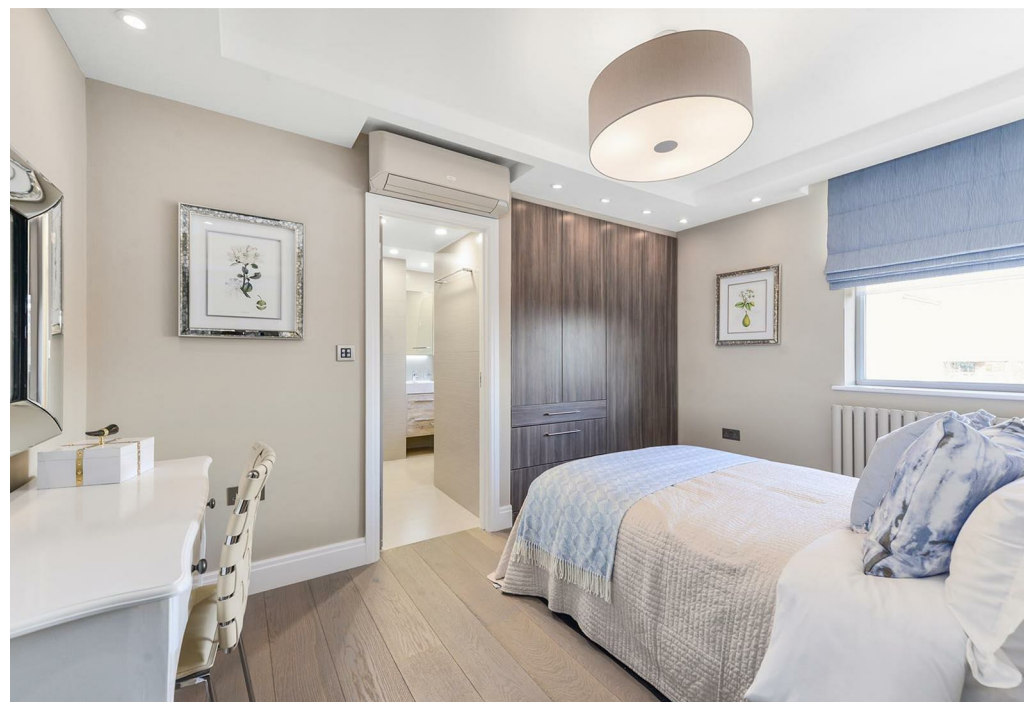
St John's Wood Park, NW8 6NJ
£6,066 Per Month





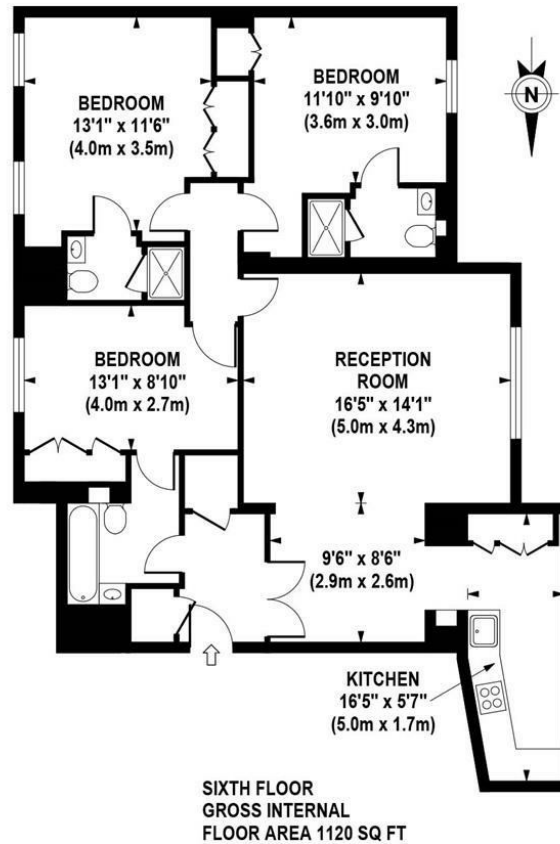
3 x  3 x  1 x 

Braithwait are delighted to offer this extremely modern three bedroom apartment situated on the sixth floor within this portered purpose built block with a lift. Accommodation comprises three large double bedrooms, three modern bathrooms (all en suite), a fully fitted kitchen, air conditioning throughout, and a very large reception room. There is a car parking space available on a first come first serve basis. It is within easy walking distance to St Johns Wood tube station and all local amenities. The property is offered furnished or unfurnished basis



BOYDELL COURT

Approximate Gross Internal Area 1120 sq ft / 104.0 sq m



Although every attempt has been made to ensure accuracy, all measurements are approximate.
The floor plan's for illustrative purposes only and not to scale. Measured in accordance to RICS standards.
DE-PHOTOGRAPHY.NET

Important Notice Debussy Property Service Ltd trading as Braithwait for themselves and for the vendor of this property whose agents they are, give notice that (i) these particulars do not constitute any part of an offer or contract, (ii) all statements contained within these particulars are made without responsibility on the part of Braithwait or the vendor, (iii) whilst none in good faith, none of the statements contained within these particulars are to be relied upon as a statement of representation or fact, (iv) any intending purchaser must satisfy him/herself by inspection or otherwise as to the correctness of each of the statements contained within these particulars, (v) the vendor does not make or give either Braithwait or any person within their employment any authority to make or give any representation or warranty whatsoever in relation to this property. Wide angled lenses may be used in photographs.

Call us on 0207 289 8889 or email sales@braithwait.co.uk

